



WindLOG™ & WindLOG™-XT-50
with 50' Extension Cable



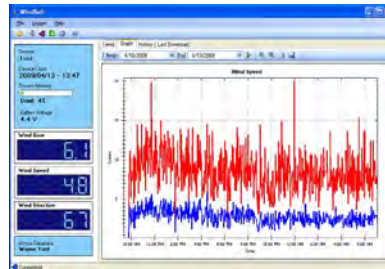
Collect wind data with the **WindLOG™**

ON-SITE AND IN REAL TIME

Document wind conditions for turbine feasibility

www.rainwise.com/windlog

- Assess viability of renewable energy projects with long-term studies.
- Perfect for small scale utility or residential turbines less than 20 kW.
- Measurement intervals from 1 minute to 1 hour based on 1-second samples.
- With a 1-second upload - virtually real time monitoring on your PC!
- 3 AA batteries will power 1 year of data collection at a 10 minute logging interval.
- Logs average speed, wind gust and average direction.
- Free software displays text, report and graphs.
- 2 year warranty.



SKU	MODEL	PRODUCT DESCRIPTION
804-1005	WINDLOG	Collect data on wind speed wind gusts wind direction in real time
804-1006	WINDLOG-XT-50	50' wind extension cable to separate anemometer from the logger
804-1007	WINDLOG-XT-100	100' wind extension cable to separate anemometer from the logger
804-1008	USBEXT	Extension kit for USB connection. Up to 100'
804-1040	WINDLOGMAST-30	Telescoping 30' mast, Guy kit and cables
804-1009	WINDLOGMAST-40	Telescoping 40' mast, Guy kit and cables
804-1050	WINDLOGMAST-50	Telescoping 50' mast, Guy kit and cables