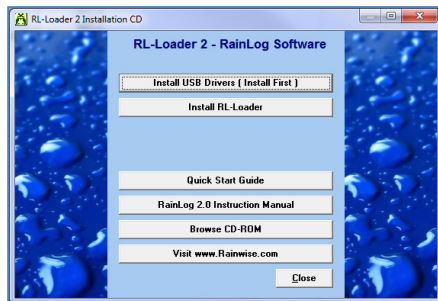


# RAINLOG 2.0 – QUICK START GUIDE

This document is intended to be used for reference purposes only. Refer to the full manual on the CR-ROM for complete instructions.

You will need a Windows PC and medium #2 Philips head screw driver.

## 1. INSERT THE CD-ROM



Allow **CD\_Start.exe** to run.  
If it does not load automatically browse the CD and run **CD\_Start.exe**.

## 2. INSTALL THE USB DRIVERS

Click the “Install USB Drivers” button. The install is rapid.

## 3. INSTALL RL-LOADER

Click the “Install RL-Loader” button and follow the prompts.

## 4. INSTALL THE BATTERIES IN THE RAINLOG



Install the two AAA batteries supplied. The green LED will flash rapidly as the RainLog powers up.

**Important: Note the battery orientation.**

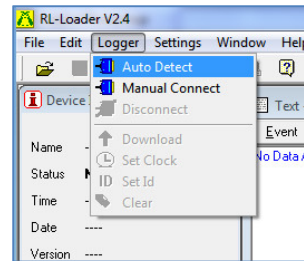
## 5. CONNECT THE RAINLOG & START RL-LOADER



Connect the RainLog to your computer using the USB cable.

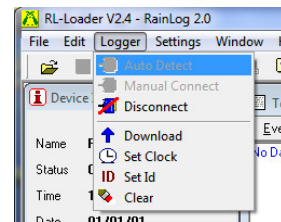
Run the RL-Loader application.

## 6. CONNECT



Auto Connect to the RainLog. If the logger is not found, refer to the manual.

## 7. SET THE NAME, CLOCK AN CLEAR



From the logger menu:

- \* Set the logger ID.
- \* Set the clock.
- \* Clear the logger memory.

## 8. CHECK THE BATTERY



Check the battery voltage. With new batteries the voltage should be above 1.5 Volts.

## 9. CLOSE RL-LOADER AND CHECK FOR GREEN LED

Close RL-Loader, disconnect the USB cable and verify that the green LED flashes.

## 10. INSTALL IN THE RAIN GAUGE



Remove the top of rain collector by loosening the screws and twisting. Remove the blue cap inside the collector. Connect the RainLog to the collector's cable.



Place the logger in the tube along with the desiccant pack. Place the blue cap back on the tube.



Reattach the top of the collector.  
Tighten the screws to secure the collector.

## 11. DEPLOY

The rain gauge can now be deployed. Ensure that the collector is securely mounted on a perfectly level surface.

**This completes setup and deployment.**

## 12. RETRIEVING THE RAINLOG

Remove the Rainlog from the collector.  
Observe the LED, verify that it is flashing green. Flashing red indicates a low battery. No flashing indicates a battery failure.

## 13. CONNECTING TO A COMPUTER

Connect the Rainlog to the computer and start the RL-loader application. Connect to the logger (Step 6).

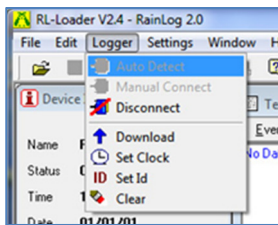
## 14. VERIFY DEVICE INFORMATION



Note the battery voltage, available memory capacity and logger time.

If the time is incorrect some data may be compromised.

## 15. DOWNLOAD



Download the data using “Download” from the “Logger” menu. Data will appear in the Text and graph windows.

## 16. SAVE THE DATA

Save the downloaded data using “Save As” in the “File” menu. This option saves the data in a RL-Loader format that can be opened by RL-Loader.

## 17. EXPORTING DATA

Data can be exported to Microsoft Excel using “Export” in the file menu.

## 18. RE-DEPLOYING

Make sure the battery voltage is good.  
Clear the memory.  
Disconnect and re-deploy.

**RainWise<sup>®</sup> Inc.** 

25 Federal Street  
Bar Harbor, ME, 04609  
United States

Website: <http://www.rainwise.com>

Email: [service@rainwise.com](mailto:service@rainwise.com)

Phone: (207) 288-5169

Fax: (207)-288-3477

Ref: V 1.0 Rev 0